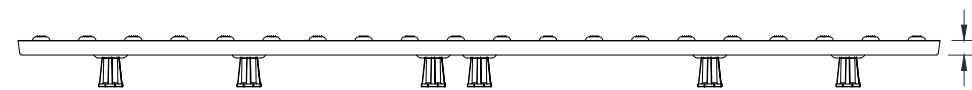


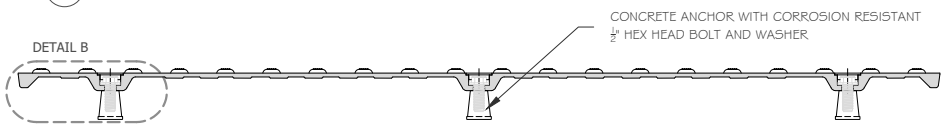
TOP VIEW

AA

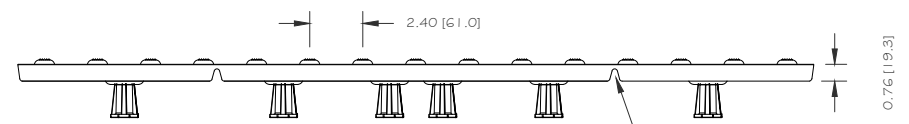
DETAIL A



AA SIDE VIEW

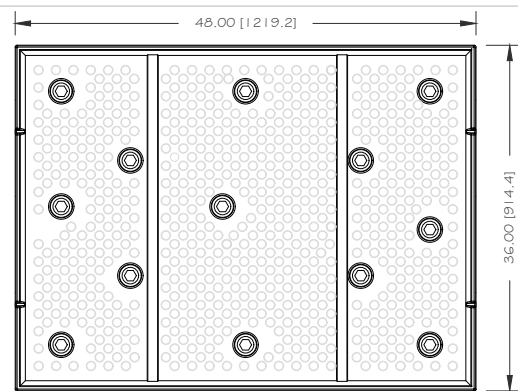


CC SECTION

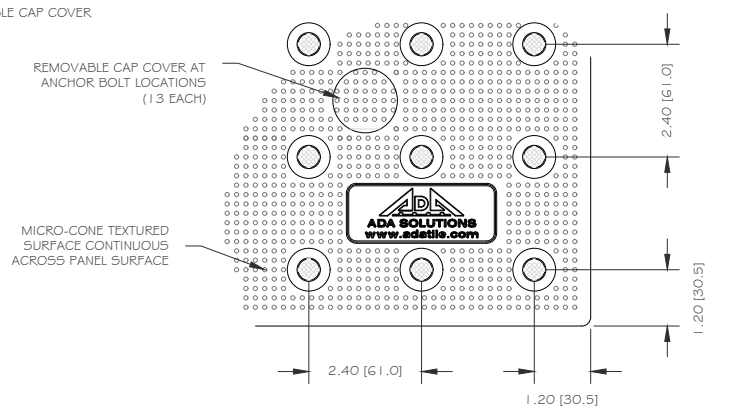


BB END VIEW

PERIMETER RIB VENT

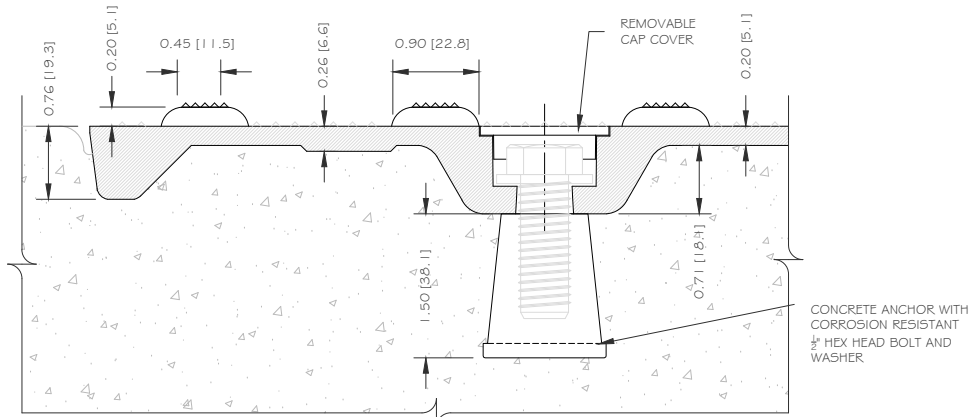


BOTTOM VIEW



A DETAIL

0.76 [19.3]



B DETAIL - INSTALLED IN CONCRETE

DETECTABLE WARNING SURFACE PANEL  
**Cast-In-Place Replaceable 36" x 48"**  
 PART SIZE: 36" (914.4 MM) X 48" (1,219.2 MM)  
 2.40" (60.96 MM) IN-LINE TRUNCATED DOME SPACING

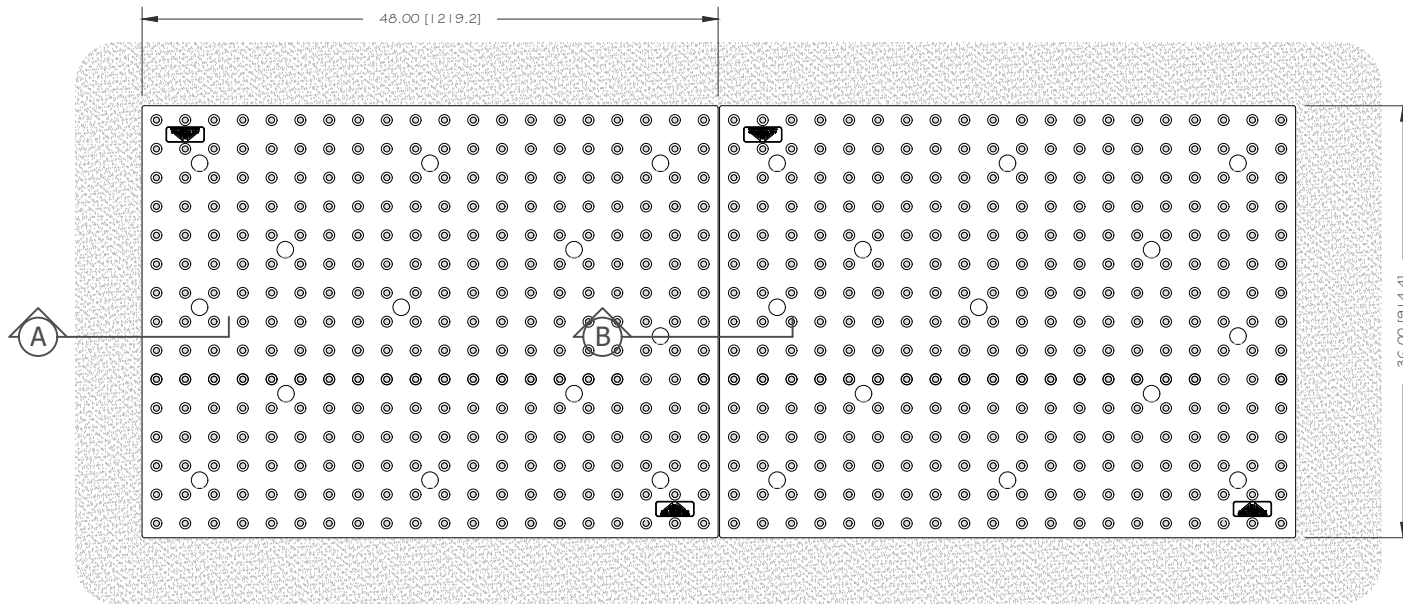
DIVISION  
 TACTILE WALKING SURFACE INDICATORS  
 MATERIAL  
 FIBERGLASS REINFORCED POLYMER COMPOSITE SMC  
 DRAWING NUMBER  
 ADA-REP2-3648 Page 1 of 2

DATE  
 2023-08-24

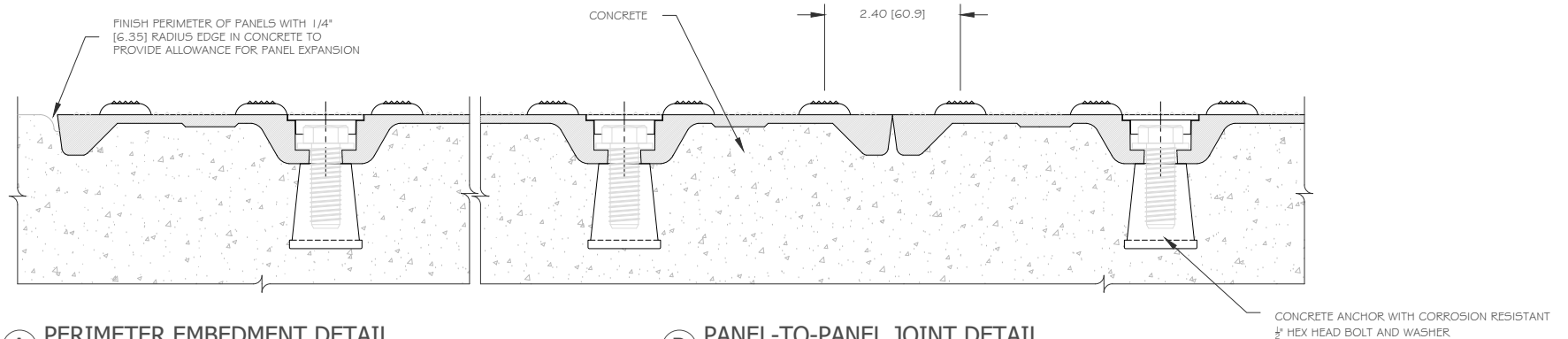
DRAWING UNITS  
 INCHES [MM]

WEBSITE  
 ADATILE.COM  
 PHONE  
 1-800-372-0519  
 EMAIL  
 INFO@ADATILE.COM





**TOP VIEW - MULTIPLE PANEL INSTALLATION**



**A PERIMETER EMBEDMENT DETAIL**

**B PANEL-TO-PANEL JOINT DETAIL**

DETECTABLE WARNING SURFACE PANEL  
**Cast-In-Place Replaceable 36" x 48"**  
 PART SIZE: 36" (914.4 MM) X 48" (1,219.2 MM)  
 2.40" (60.96 MM) IN-LINE TRUNCATED DOME SPACING

DIVISION  
 TACTILE WALKING SURFACE INDICATORS  
 MATERIAL  
 FIBERGLASS REINFORCED POLYMER COMPOSITE SMC  
 DRAWING NUMBER  
 ADA-REP2-3648 Page 2 of 2

DATE  
 2023-08-24

DRAWING UNITS  
 INCHES [MM]

WEBSITE  
 ADATILE.COM  
 PHONE  
 1-800-372-0519  
 EMAIL  
 INFO@ADATILE.COM

