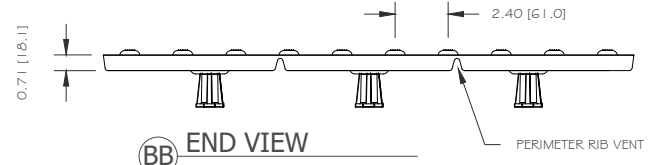
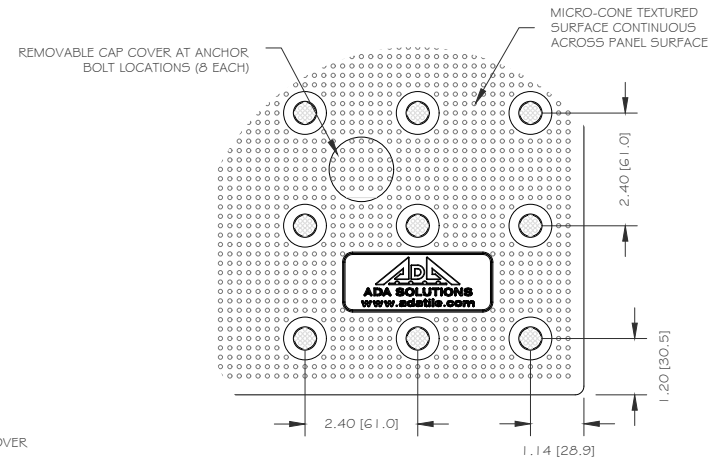


TOP VIEW

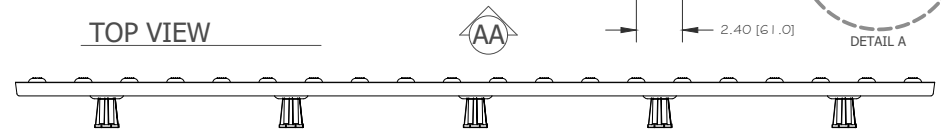
ANCHOR BOLT LOCATION (SHOWN WITHOUT CAP COVER INSTALLED)



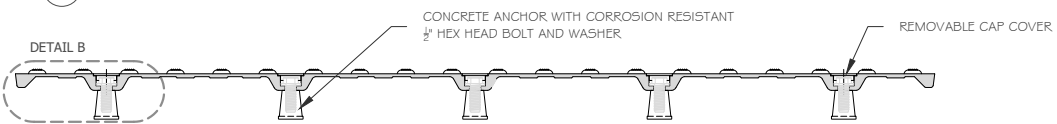
BB END VIEW



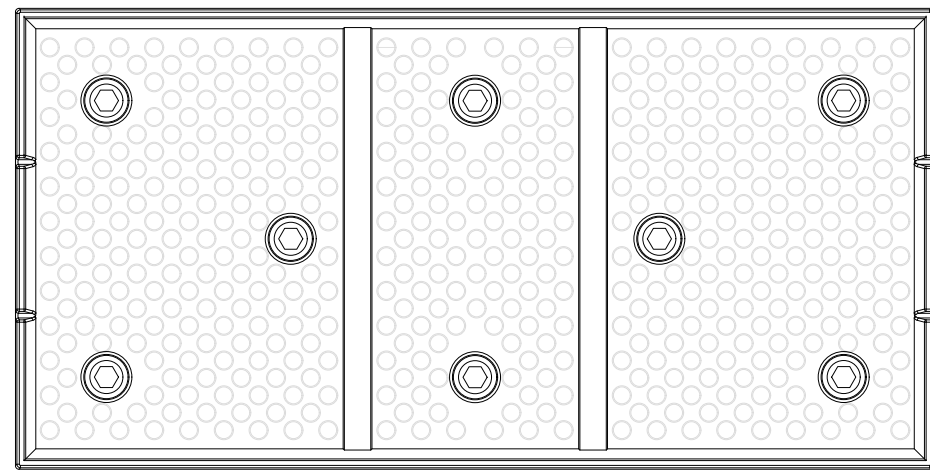
A DETAIL



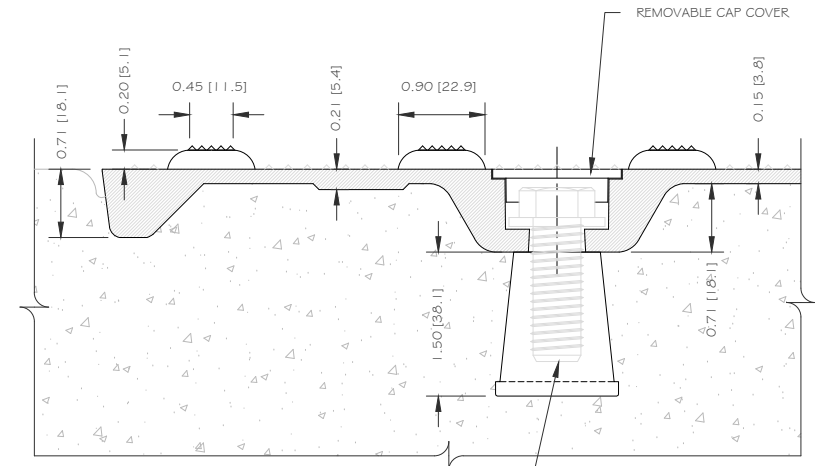
AA SIDE VIEW



CC SECTION



BOTTOM VIEW



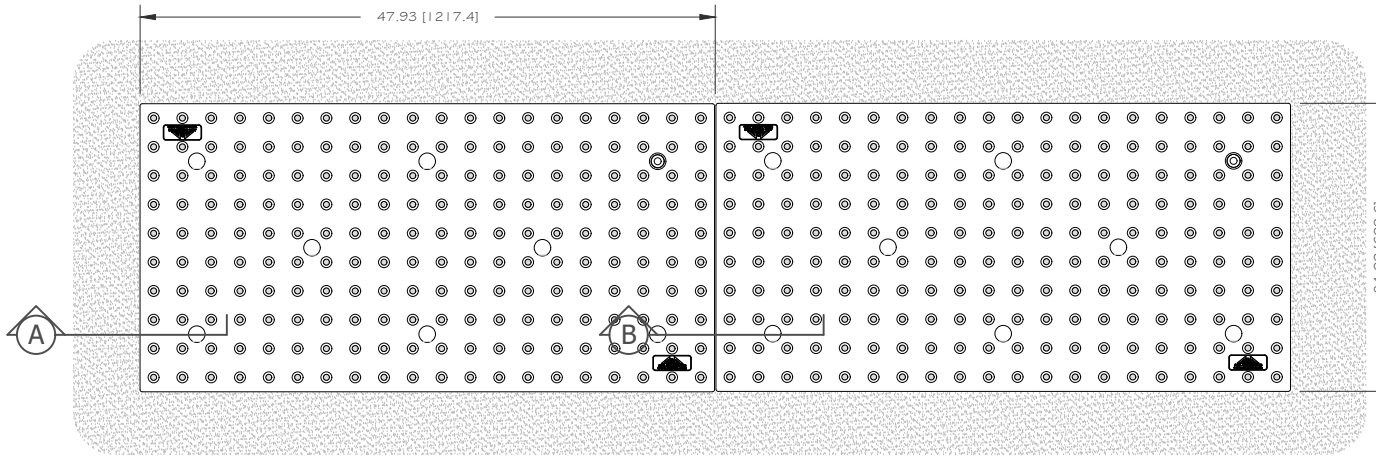
B DETAIL - INSTALLED IN CONCRETE

DETECTABLE WARNING SURFACE PANEL
Cast-In-Place Replaceable 24" x 48"
 PART SIZE: 24" (609.6 MM) X 47.875" (1,216.0 MM)
 2.40" (60.96 MM) IN-LINE TRUNCATED DOME SPACING

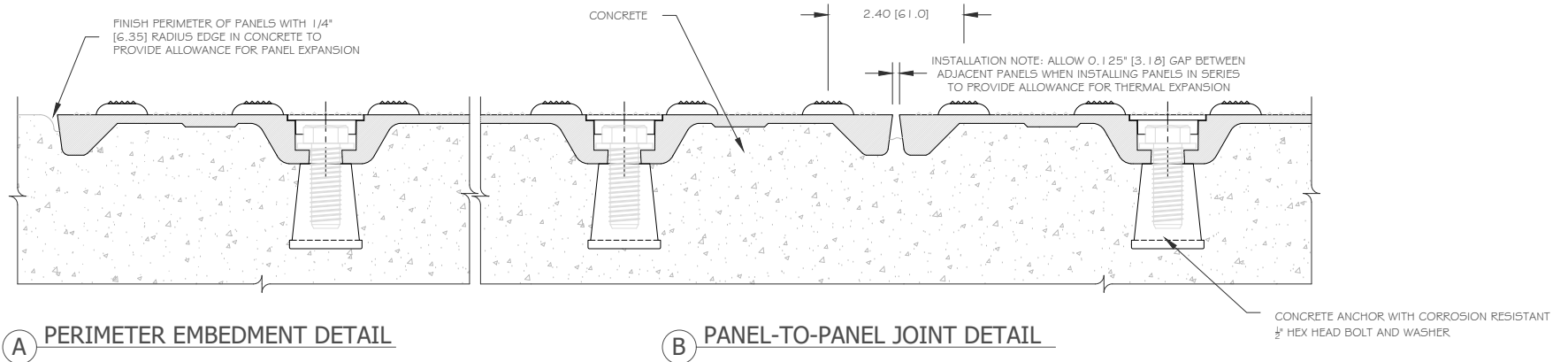
DIVISION
TACTILE WALKING SURFACE INDICATORS
 MATERIAL
FIBERGLASS REINFORCED POLYMER COMPOSITE SMC
 DRAWING NUMBER
ADA-REP2-2448 Page 1 of 2
 DATE
2023-08-25
 DRAWING UNITS
INCHES [MM]

WEBSITE
ADATILE.COM
 PHONE
1-800-372-0519
 EMAIL
INFO@ADATILE.COM





TOP VIEW - MULTIPLE PANEL INSTALLATION



DETECTABLE WARNING SURFACE PANEL
Cast-In-Place Replaceable 24" x 48"
 PART SIZE: 24" (609.6 MM) X 47.875" (1,216.0 MM)
 2.40" (60.96 MM) IN-LINE TRUNCATED DOME SPACING

DIVISION
TACTILE WALKING SURFACE INDICATORS

MATERIAL
FIBERGLASS REINFORCED POLYMER COMPOSITE SMC

DRAWING NUMBER
ADA-REP2-2448 Page 2 of 2

DATE
2023-08-25

DRAWING UNITS
INCHES [MM]

WEBSITE
ADATILE.COM

PHONE
1-800-372-0519

EMAIL
INFO@ADATILE.COM

