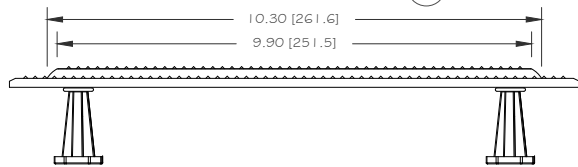
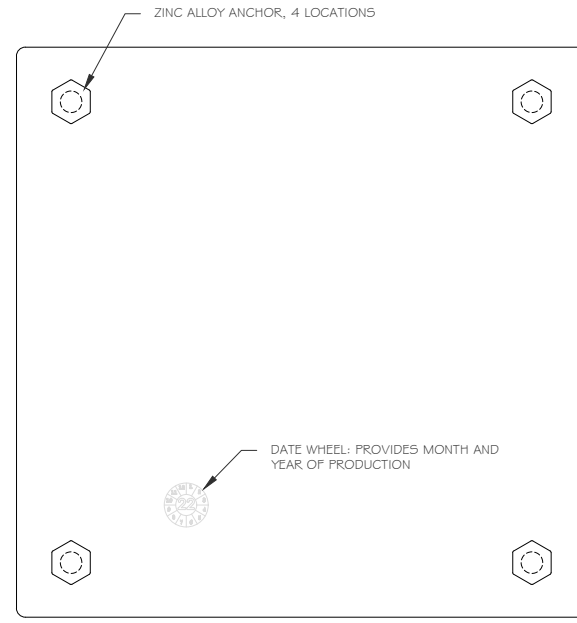


TOP VIEW

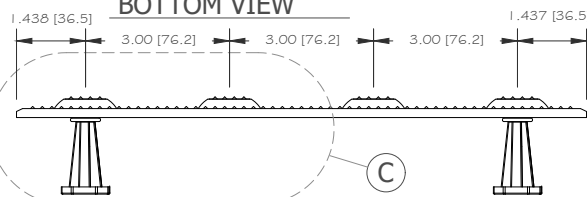
A AA



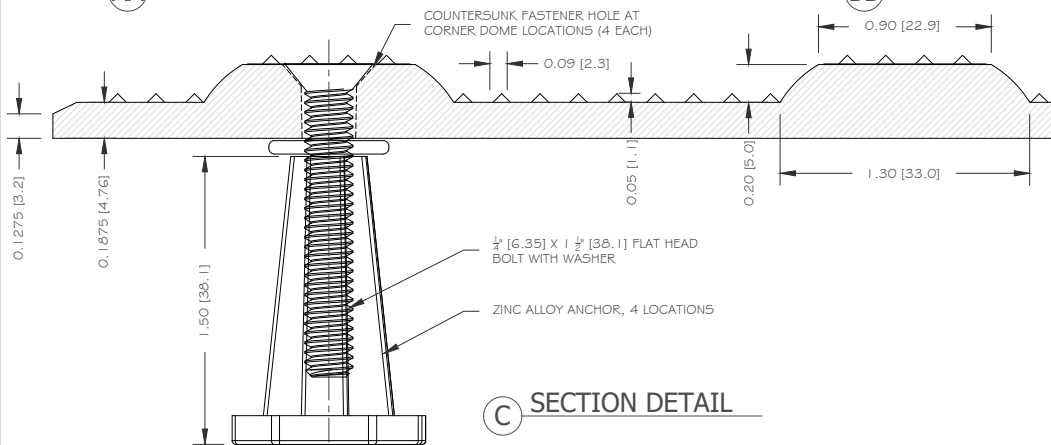
AA SIDE VIEW



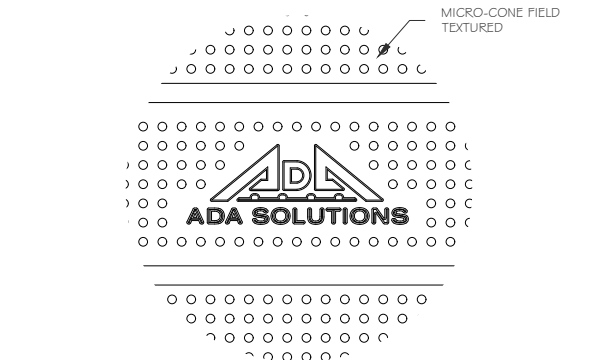
BOTTOM VIEW



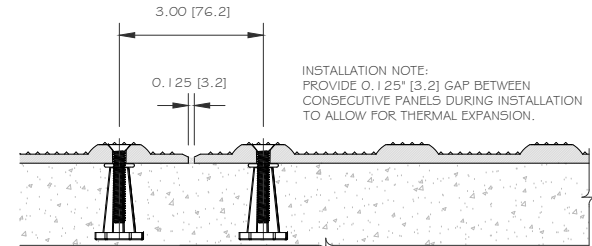
BB END VIEW



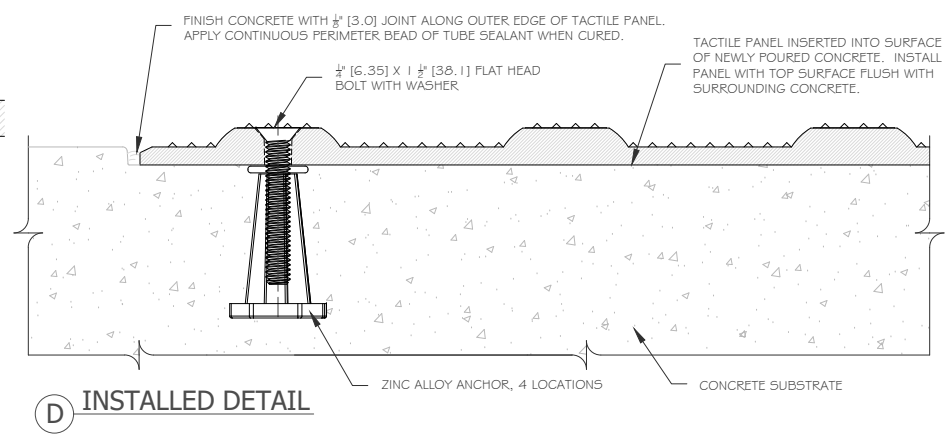
C SECTION DETAIL



A LOGO DETAIL



B INSTALLATION IN SERIES
(DIRECTIONAL ORIENTATION OF BARS MAY VARY)



D INSTALLED DETAIL

DIRECTIONAL WAYFINDING PANEL
12" x 12" Cast-In-Place Directional Guide Tile
 PART SIZE: 11.875" (301.62 MM) X 11.875" (301.62 MM)
 3.00" (76.2 MM) DIRECTIONAL BAR SPACING

DIVISION
 TACTILE WALKING SURFACE INDICATORS
 MATERIAL
 FIBERGLASS REINFORCED POLYMER COMPOSITE SMC
 DRAWING NUMBER
 ADA-BAR1212 Cast In Place

DATE
 2022-06-10
 DRAWING UNITS
 INCHES [MM]

WEBSITE
 ADATILE.COM
 PHONE
 1-800-372-0519
 EMAIL
 INFO@ADATILE.COM

