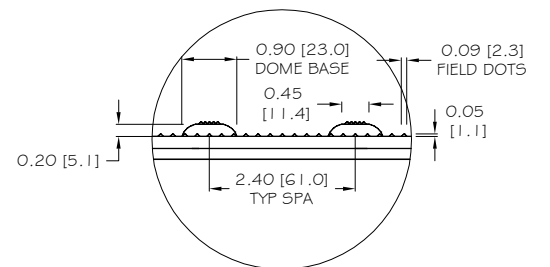
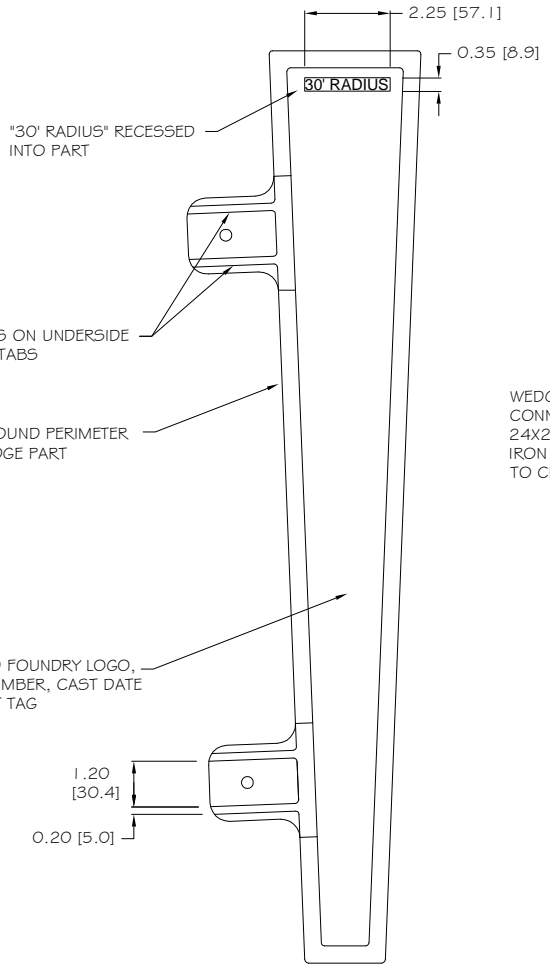
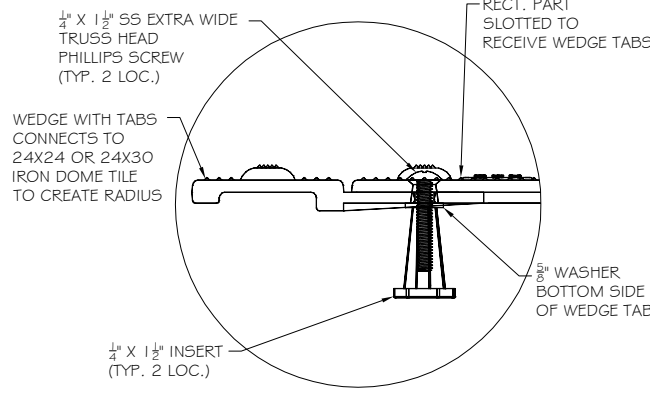


RAISED ADA INFO



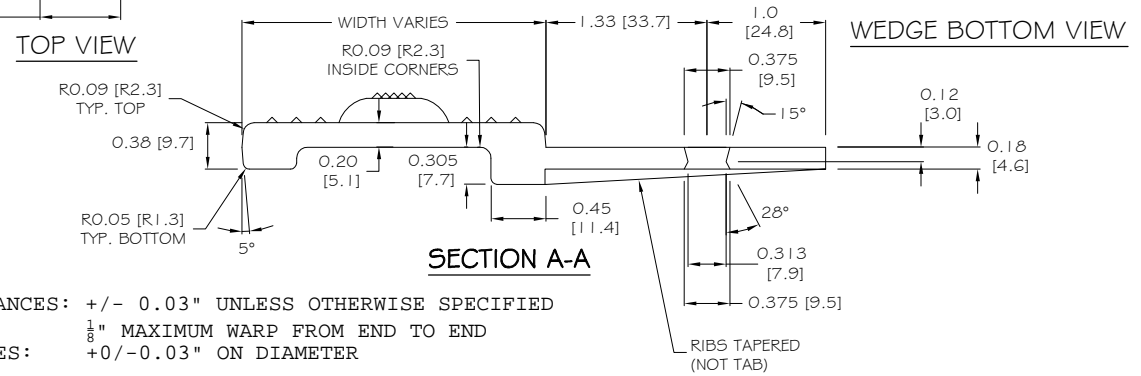
SECTION B-B



CONNECTION DETAIL

TOP VIEW

WEDGE BOTTOM VIEW



SECTION A-A

- NOTES:**
- 1) CASTING TOLERANCES: +/- 0.03" UNLESS OTHERWISE SPECIFIED
1/8" MAXIMUM WARP FROM END TO END
 - 2) HOLE TOLERANCES: +0/-0.03" ON DIAMETER
 - 3) MATERIAL: METAL SPECIFICATION ASTM A159 G3000 CAST IRON
 - 4) UNSPECIFIED FILLET R=.08" MAXIMUM

**NOTE: PRIMARY DIMENSION INCHES
mm IN PARENTHESES
ALL DIMENSIONS NOMINAL**

TRADE TACTILE WARNING SURFACE	PART NO. 30' WEDGE IRON DOME
MATERIAL CAST IRON	

PROJECT
iron dome®
 REPLACEABLE TACTILE
 WARNING SURFACE UNIT
 30' RADIUS WEDGE
 PART SIZE 4" (102mm) X 24" (610mm)
 PLANS AND DETAILS

DRAWING NO. ADA-REP_CI30WEDGE	REV C	DATE 05-03-18
----------------------------------	----------	------------------



WWW.ADATILE.COM
 PHONE: (800)372-0519
 EMAIL: INFO@ADATILE.COM