

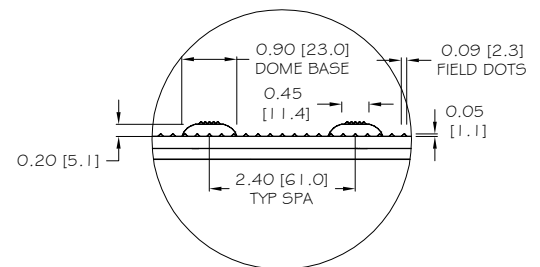
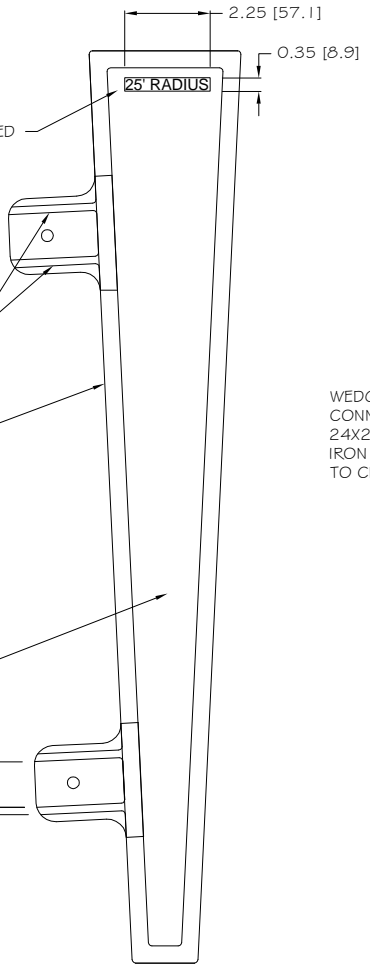
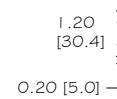
RAISED ADA INFO

"30" RADIUS" RECESSED INTO PART

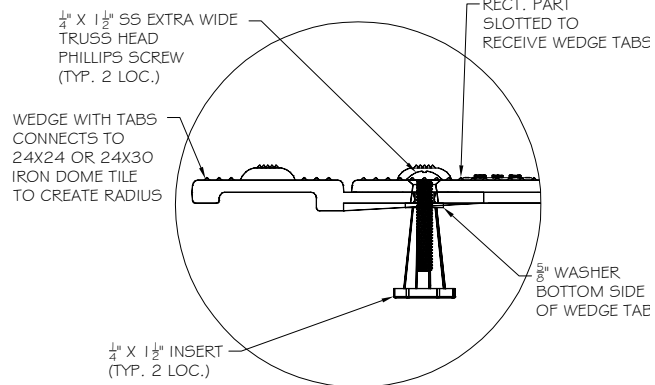
RIBS ON UNDERSIDE OF TABS

RIB AROUND PERIMETER OF WEDGE PART

RECESSED FOUNDRY LOGO, CAVITY NUMBER, CAST DATE AND SHIFT TAG

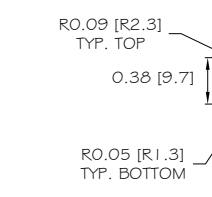


SECTION B-B



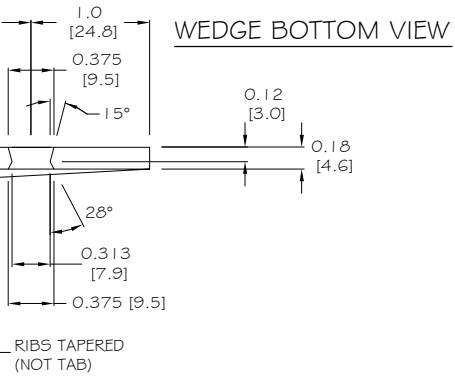
CONNECTION DETAIL

TOP VIEW



SECTION A-A

WEDGE BOTTOM VIEW



NOTE: PRIMARY DIMENSION INCHES
mm IN PARENTHESES
ALL DIMENSIONS NOMINAL

TRADE TACTILE WARNING SURFACE	PART NO. 25' WEDGE IRON DOME
MATERIAL CAST IRON	

PROJECT
ironDOME®
 REPLACEABLE TACTILE
 WARNING SURFACE UNIT
 25' RADIUS WEDGE
 PART SIZE 4" (102mm) X 24" (610mm)
 PLANS AND DETAILS

DRAWING NO. ADA-REP_CI25WEDGE	REV A	DATE 05-31-18
----------------------------------	----------	------------------



WWW.ADATILE.COM
 PHONE: (800)372-0519
 EMAIL: INFO@ADATILE.COM

- NOTES:
- 1) CASTING TOLERANCES: +/- 0.03" UNLESS OTHERWISE SPECIFIED
1/8" MAXIMUM WARP FROM END TO END
 - 2) HOLE TOLERANCES: +0/-0.03" ON DIAMETER
 - 3) MATERIAL: METAL SPECIFICATION ASTM A159 G3000 CAST IRON
 - 4) UNSPECIFIED FILLET R=.08" MAXIMUM