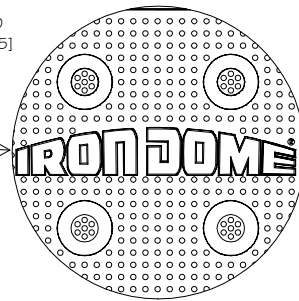
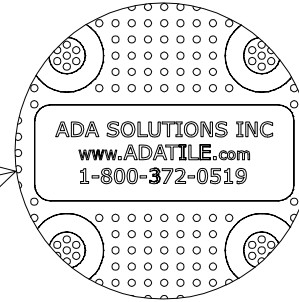


CAST IRON 24X24 TILE TOP VIEW



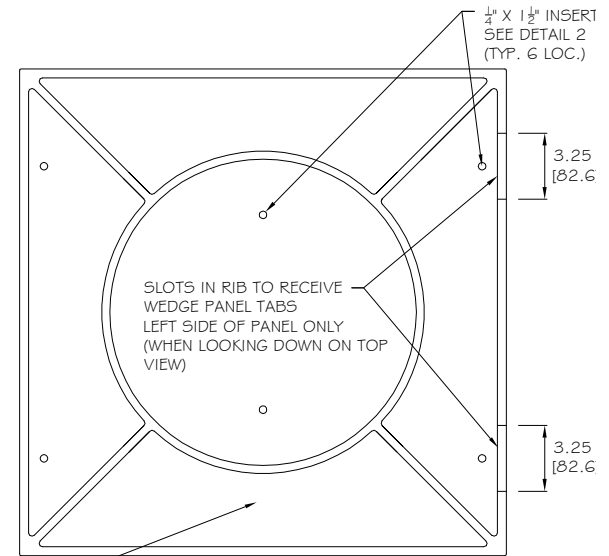
RAISED IRON DOME LOGO

1/4" SS EXTRA WIDE TRUSS HEAD PHILLIPS SCREW  
X 1 1/2" LONG INTO 1/4" X 1 1/2" INSERT  
SEE DETAIL 2 (TYP. 6 LOC.)  
SEE DETAIL 3 FOR HOLE DIMENSIONS



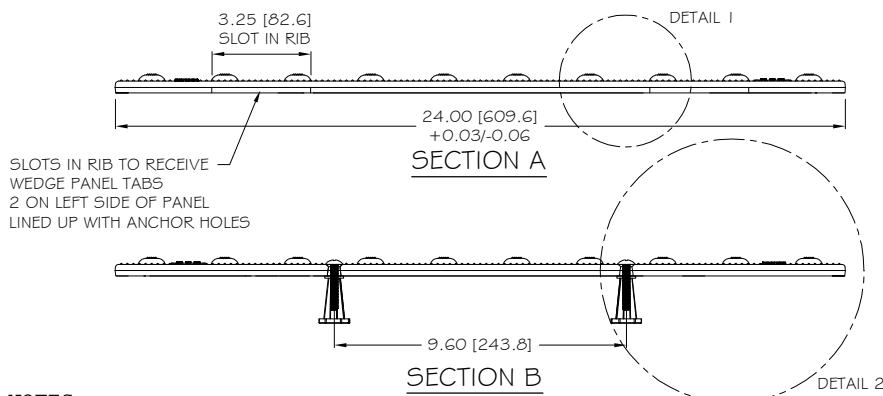
RAISED ADA INFO

RECESSED FOUNDRY LOGO,  
CAVITY NUMBER  
AND CAST DATE



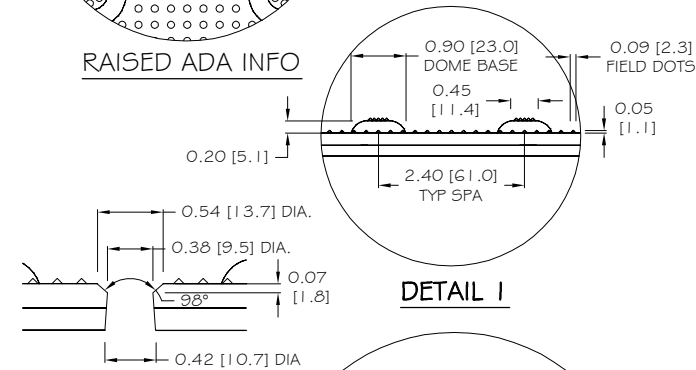
CAST IRON 24X24 TILE BOTTOM VIEW

SLOTS IN RIB TO RECEIVE  
WEDGE PANEL TABS  
LEFT SIDE OF PANEL ONLY  
(WHEN LOOKING DOWN ON TOP  
VIEW)



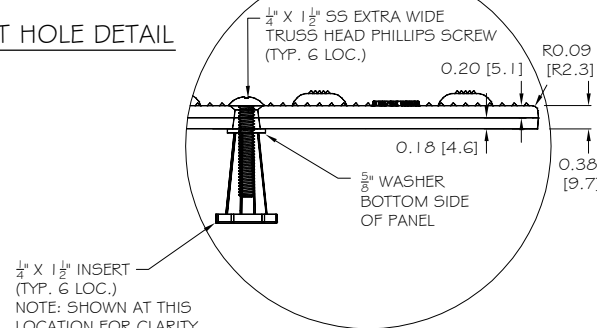
SECTION A

SECTION B



DETAIL 1

INSERT HOLE DETAIL



DETAIL 2

1/4" X 1 1/2" INSERT  
(TYP. 6 LOC.)  
NOTE: SHOWN AT THIS  
LOCATION FOR CLARITY

NOTE: PRIMARY DIMENSION INCHES  
mm IN PARENTHESES  
ALL DIMENSIONS NOMINAL

TRADE TACTILE WARNING SURFACE	PART NO. 24X24 IRON DOME
MATERIAL CAST IRON	

PROJECT  
**IRON DOME**  
REPLACEABLE TACTILE  
WARNING SURFACE UNIT  
6-BOLT LOCATIONS  
PART SIZE 24" (610mm) X 24" (610mm)  
PLANS AND DETAILS

DRAWING NO. ADA-REP_CI2424_TH	REV 3	DATE 07-23-18
----------------------------------	----------	------------------



WWW.ADATILE.COM  
PHONE: (800)372-0519  
EMAIL: INFO@ADATILE.COM

- NOTES:
- 1) CASTING TOLERANCES: +/- 0.03" UNLESS OTHERWISE SPECIFIED  
1/8" MAXIMUM WARP FROM CORNER TO CORNER
  - 2) MATERIAL: METAL SPECIFICATION ASTM A159 G3000 CAST IRON
  - 3) UNSPECIFIED FILLET R=0.04" MAXIMUM