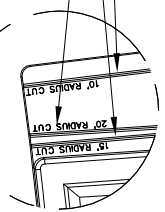
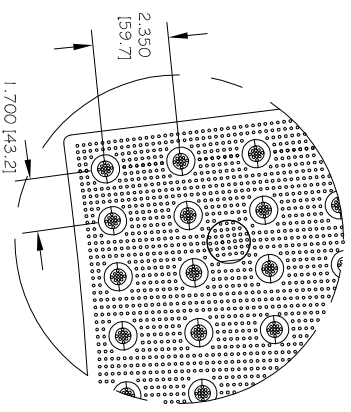
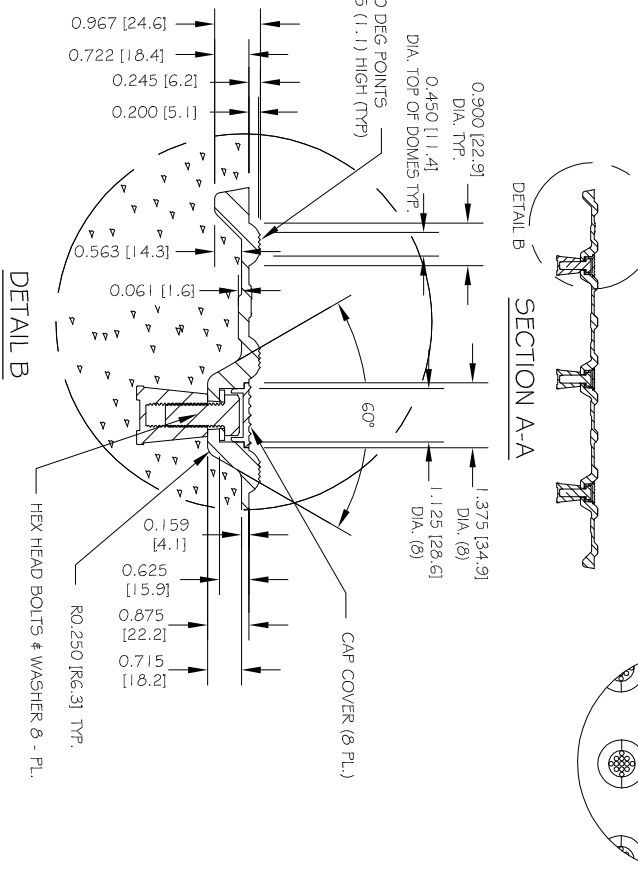
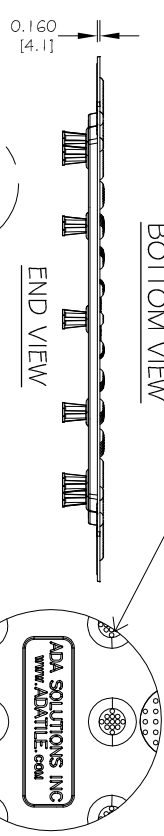


IMPERIAL UNIT CHART

Curb Radius	'A' Dimension	'B' Dimension
10'	2' - 8 5/16"	2' - 2 7/16"
15'	2' - 3 5/8"	1' - 11 7/16"
20'	2' - 3 1/16"	1' - 11 15/16"

METRIC UNIT CHART

Curb Radius (m)	'A' Dimension (mm)	'B' Dimension (mm)
3.05	821	671
4.57	702	595
6.10	687	608



ALL DIMENSIONS NOMINAL  
 PRIMARY DIMENSION INCHES  
 mm IN PARENTHESES  
 U.S. PATENT #9,365,984

TRADE NAME: TACTILE WARNING SURFACE  
 MATERIAL: SMC COMPOSITE  
 PART NO.: 248RADREP

**PROJECT**  
 WET SET ADA REPLACEABLE TACTILE WARNING SURFACE UNIT  
 8-BOLT LOCATIONS  
 2.350" (59.7mm) IN LINE TRUNCATED DOME  
 PART SIZE 24" (610mm) x 10" (3.05m), 15" (4.57m), 20" (6.1m) RADIAL  
 PLANS AND DETAILS

DRAWING NO.: ADA-REP24RAD  
 DATE: 06-15-17

**ADA SOLUTIONS, INC.**  
 DETECTABLE WARNING SURFACES FOR PEDESTRIAN CROSSINGS  
 WWW.ADATILE.COM  
 PHONE: (800)372-0519  
 EMAIL: INFO@ADATILE.COM