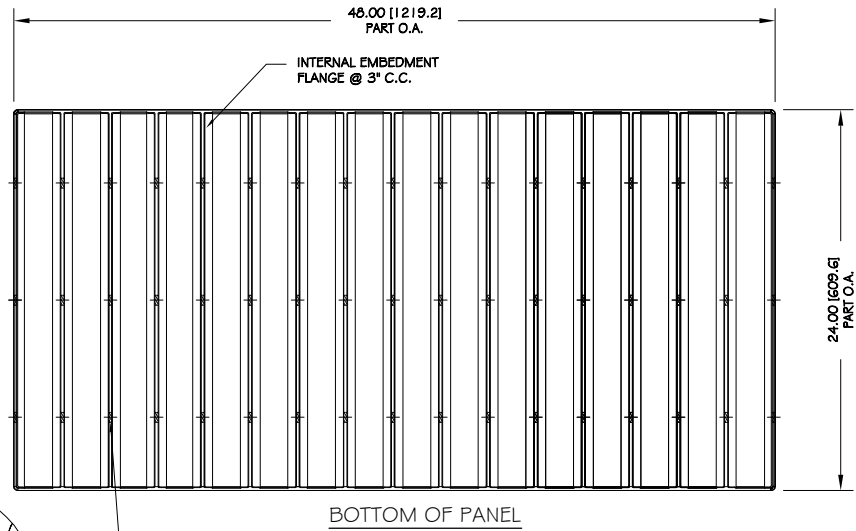
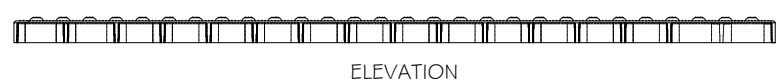


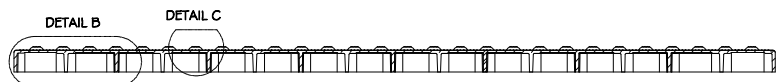
TOP OF PANEL



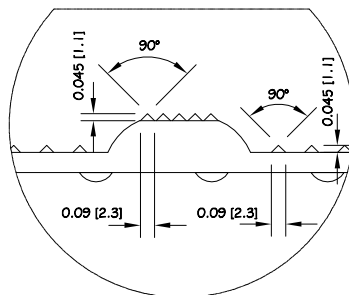
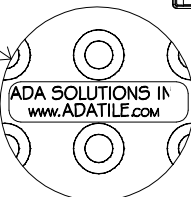
BOTTOM OF PANEL



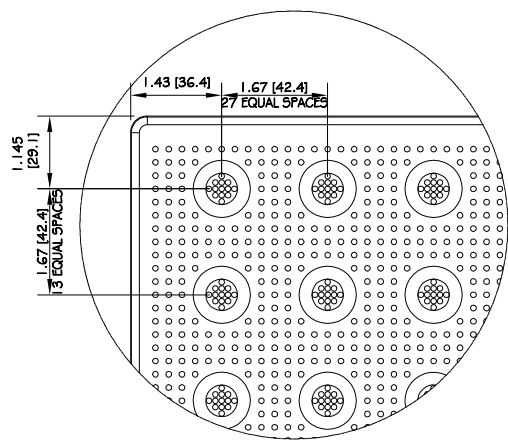
ELEVATION



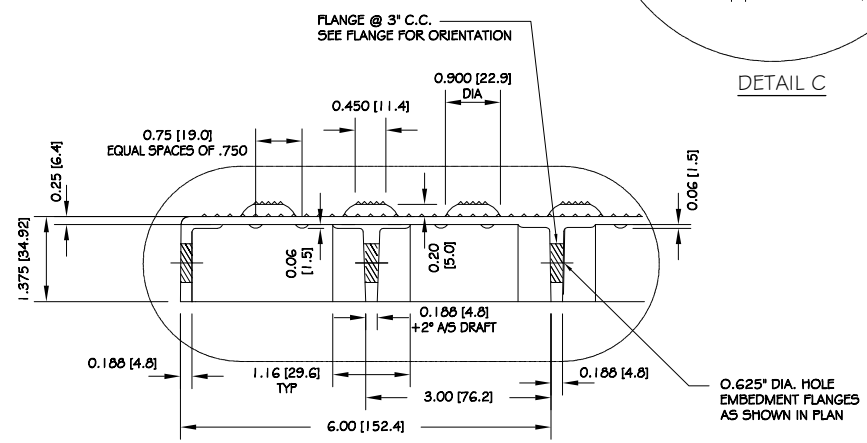
SECTION A-A



DETAIL C



DETAIL A



DETAIL B

ALL DIMENSIONS NOMINAL PRIMARY DIMENSION INCHES mm IN PARENTHESES	
TRADE TACTILE WARNING SURFACE	PART NO. 2448IDPAVL_
MATERIAL SMC COMPOSITE	
<b>PROJECT</b> CAST-IN-PLACE TACTILE WARNING SURFACE UNIT 1.670" (42.4mm) IN LINE TRUNCATED DOME PART SIZE: 24" (610mm) x 48" (1219mm) PLANS AND DETAILS	
DRAWING NO. ADA-CIP2448_1	DATE 06-15-17
 <b>ADA SOLUTIONS, INC.</b> DETECTABLE WARNING SURFACES FOR PEDESTRIAN CROSSINGS  WWW.ADATILE.COM PHONE: (800)372-0519 EMAIL: INFO@ADATILE.COM	