



INSTALLATION PROCEEDURE:

IRON DOME® & IRON DOME® SECURE FLANGE
CAST IRON PLATES DETECTABLE WARNING SURFACE

IRON DOME® & IRON DOME® SECURE FLANGE

Cast Iron Detectable Warning Surface Plates with an in-line truncated dome pattern are embedded in newly poured concrete at pedestrian crossings, boarding platforms, and rail crossing locations. The Iron Dome® Plates are extremely durable and wear resistant. The high-strength plates resist damage from mechanical snow removal methods in colder climate regions.

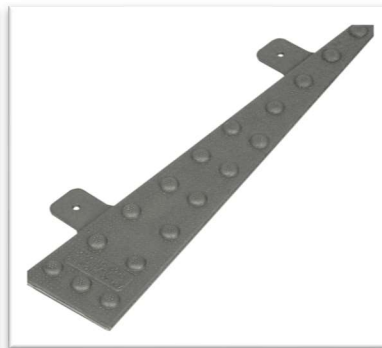


Panel Sizes (nominal):

- 24" x 12" (609 x 304 mm) with zinc alloy embedment anchors
- 24" x 24" (609 x 609 mm) with **Secure Flange** embedment features
- 24" x 30" (609 x 762 mm) with **Secure Flange** embedment features
- Tapered Wedges R15, R20, R25, and R30 with zinc alloy embedment anchors

INSTALLATION PROCEEDURES

- Plates shall be wet-set into a minimum 3" (76.2 mm) depth of concrete (4"-7" slump). Concrete shall be poured and leveled as required to meet project requirements.
- Without removing any concrete, locate the bottom edge of the plate into position at the bottom of the curb ramp adjacent to the back of the curb line or as directed by local municipality guidelines.
- Rotate plate down into the wet concrete and apply pressure across the top surface to set into concrete.
- With a rubber mallet, lightly strike the top surface of the plate while moving around in a grid-like pattern. Ensure that there are no voids or air pockets between the concrete and the plates. The field level of the plates shall be flush to the adjacent concrete surface.
- Create an edge around the perimeter of the detectable warning plates using a 3/8" radius edging tool then float the concrete around the perimeter of the plate using a flat trowel.
- Multiple panels can be installed in series to match specific curb ramp widths or length of specific installation. Provide a gap of 1/8" (3.17 mm) between consecutive panels to allow for thermal expansion.
- Using a smart level, make sure the ramp and plates maintain compliance for slope with ADA/PROWAG requirements and in accordance with local municipality guidelines.
- Radius applications: For radius installations, tapered wedge plates are to be installed between rectangular plates. Consult with ADA Solutions to determine plate layout for various custom radius conditions. Attach radius wedge plates to adjacent rectangular plates with provided 1/4" (6.35 mm) stainless bolts and zinc alloy anchors. Tapered wedge plates have two attachment tabs with bolt holes that align with holes on rectangular plates.
- *Cutting Note: Plates can be field cut to custom sizes or angles using a circular saw or angle grinder with an abrasive cut-off wheel designed for cutting heavy gauge ferrous metals.*



ADA Solutions, a Division of SureWerx USA Inc.

149 South Cucumber Street
Jefferson, Ohio 44047
Phone: 800-372-0519
Fax: 978-262-9125
Web: adatile.com

