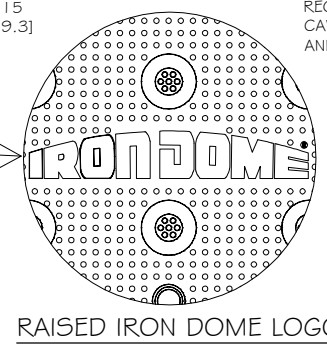
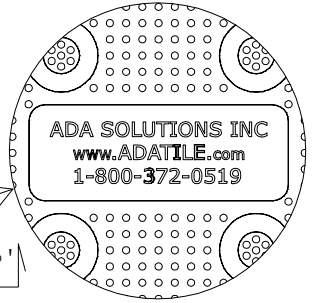


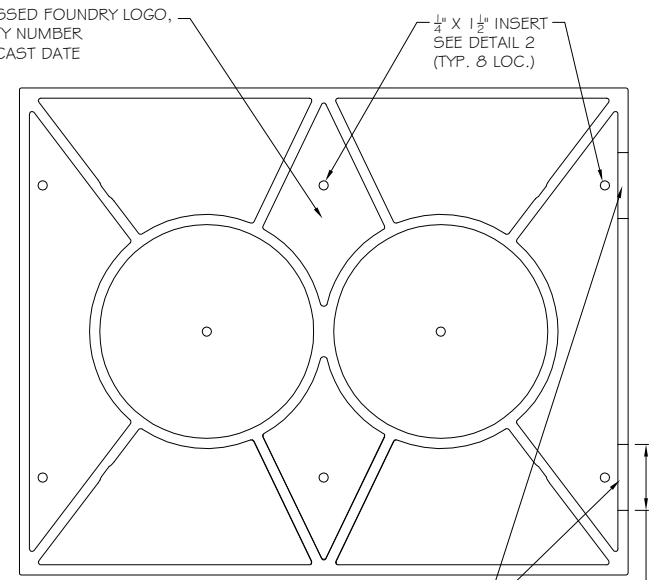
CAST IRON 24X30 TILE TOP VIEW



RAISED IRON DOME LOGO



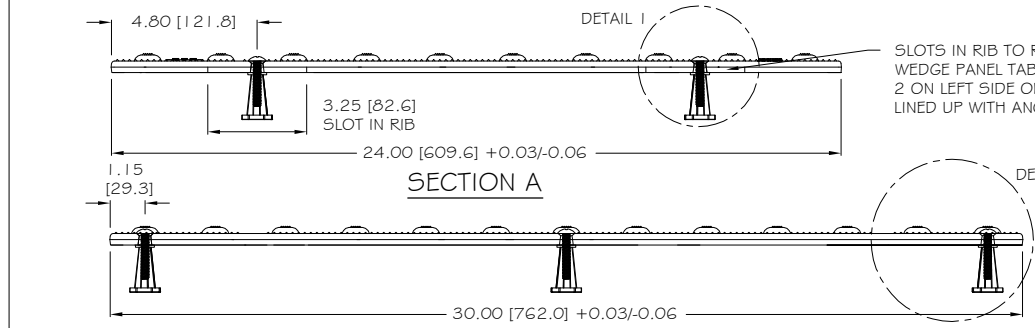
RAISED ADA INFO



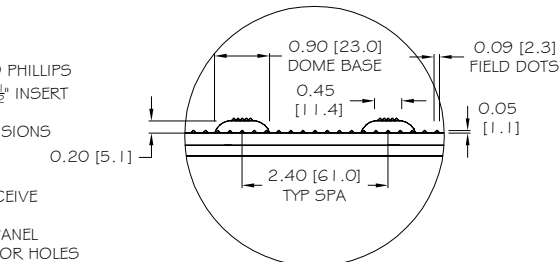
CAST IRON 24X30 TILE BOTTOM VIEW



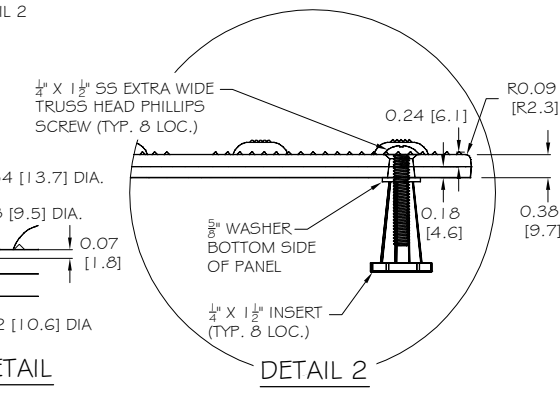
SECTION A



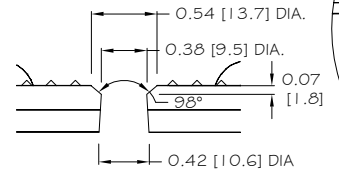
SECTION B



DETAIL 1



DETAIL 2



INSERT HOLE DETAIL

NOTE: PRIMARY DIMENSION INCHES
mm IN PARENTHESES
ALL DIMENSIONS NOMINAL

TRADE TACTILE WARNING SURFACE	PART NO. 24X30 IRON DOME
MATERIAL CAST IRON	

PROJECT

 REPLACEABLE TACTILE
 WARNING SURFACE UNIT
 8-BOLT LOCATIONS
 PART SIZE 24" (610mm) X 30" (762mm)
 PLANS AND DETAILS

DRAWING NO. ADA-REP_CI2430_TH	REV 3	DATE 07-23-18
----------------------------------	----------	------------------



WWW.ADATILE.COM
 PHONE: (800)372-0519
 EMAIL: INFO@ADATILE.COM

- NOTES:
- 1) CASTING TOLERANCES: +/- 0.03" UNLESS OTHERWISE SPECIFIED
1/8" MAXIMUM WARP FROM CORNER TO CORNER
 - 2) MATERIAL: METAL SPECIFICATION ASTM A159 G3000 CAST IRON
 - 3) UNSPECIFIED FILLET R=0.04" MAXIMUM