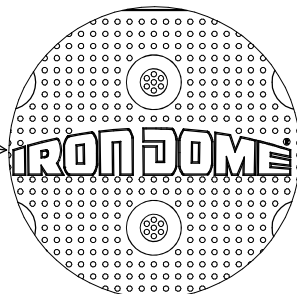
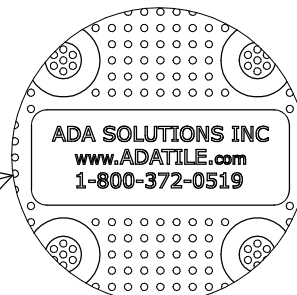


CAST IRON 1 2X24 TILE TOP VIEW

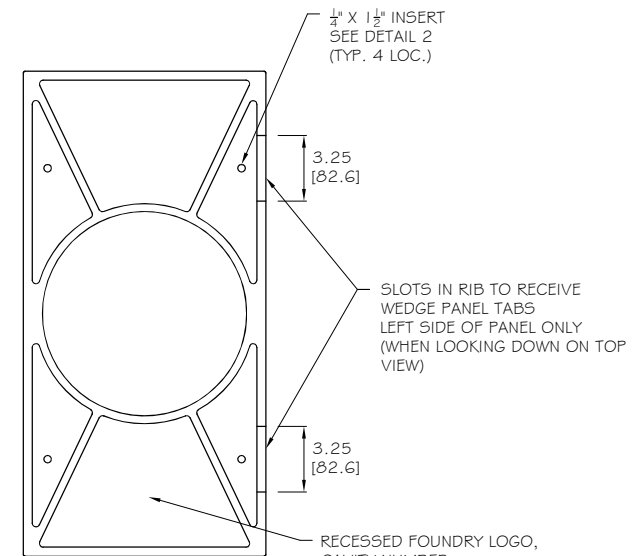


RAISED IRON DOME LOGO

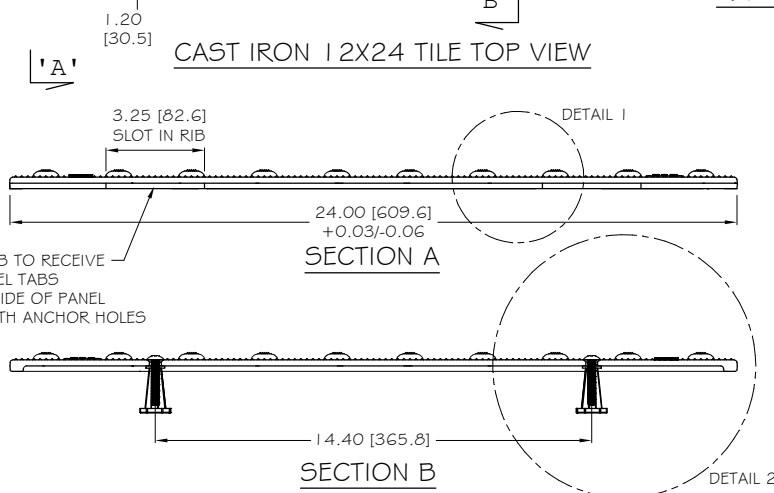
1/4" SS EXTRA WIDE TRUSS HEAD PHILLIPS SCREW X 1 1/2" LONG INTO 1/4" X 1 1/2" INSERT SEE DETAIL 2 (TYP. 4 LOC.) SEE DETAIL 3 FOR HOLE DIMENSIONS



RAISED ADA INFO

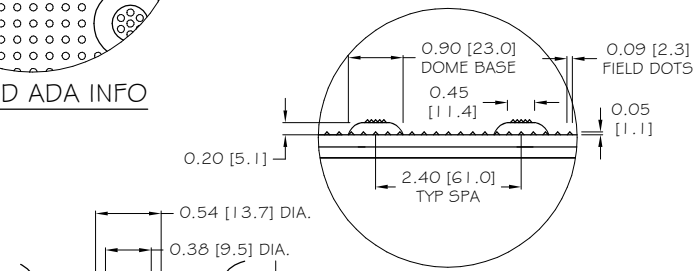


CAST IRON 1 2X24 TILE BOTTOM VIEW

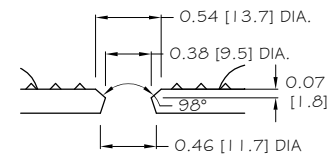


SECTION A

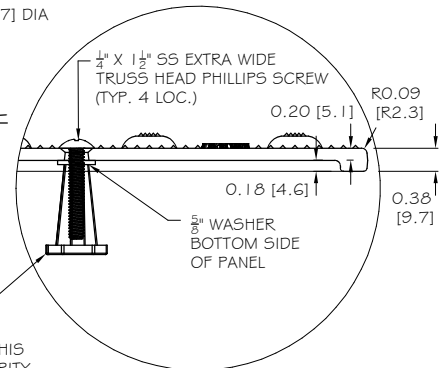
SECTION B



DETAIL 1



DETAIL 3
INSERT HOLE DETAIL



DETAIL 2

NOTE: PRIMARY DIMENSION INCHES
mm IN PARENTHESES
ALL DIMENSIONS NOMINAL

TRADE TACTILE WARNING SURFACE	PART NO. 12X24 IRON DOME
MATERIAL CAST IRON	

PROJECT

 REPLACEABLE TACTILE WARNING SURFACE UNIT
 4-BOLT LOCATIONS
 PART SIZE 12" (305mm) X 24" (610mm)
 PLANS AND DETAILS

DRAWING NO. ADA-REP_CI1224_TH	REV 1	DATE 02-14-19
----------------------------------	----------	------------------



WWW.ADATILE.COM
 PHONE: (800)372-0519
 EMAIL: INFO@ADATILE.COM

- NOTES:
- 1) CASTING TOLERANCES: +/- 0.03" UNLESS OTHERWISE SPECIFIED
1/8" MAXIMUM WARP FROM CORNER TO CORNER
 - 2) MATERIAL: METAL SPECIFICATION ASTM A159 G3000 CAST IRON
 - 3) UNSPECIFIED FILLET R=0.04" MAXIMUM